

1. **Create Slide 3:** Open the previous exercise, **“Super Smash Brothers\_Exercise 1.pptx”** Save as: **“Super Smash Brothers\_Exercise 2.pptx”** Click on Slide 2 and choose **Insert, New Slide, Blank.**
2. Insert the following characters using **Insert, Picture:** daisy.png, yoshi.png, bowser.png, luigi.png, donkey\_kong.png, link.png, jigglypuff.png, mario.png, pikachu.png, kirby.png, zelda.png, captain\_falcon.png, peach.png



3. Size each picture to fit in the desired space by dragging the handles. **HINT: Hold the shift key down while sizing the picture to keep the image’s ratio.**



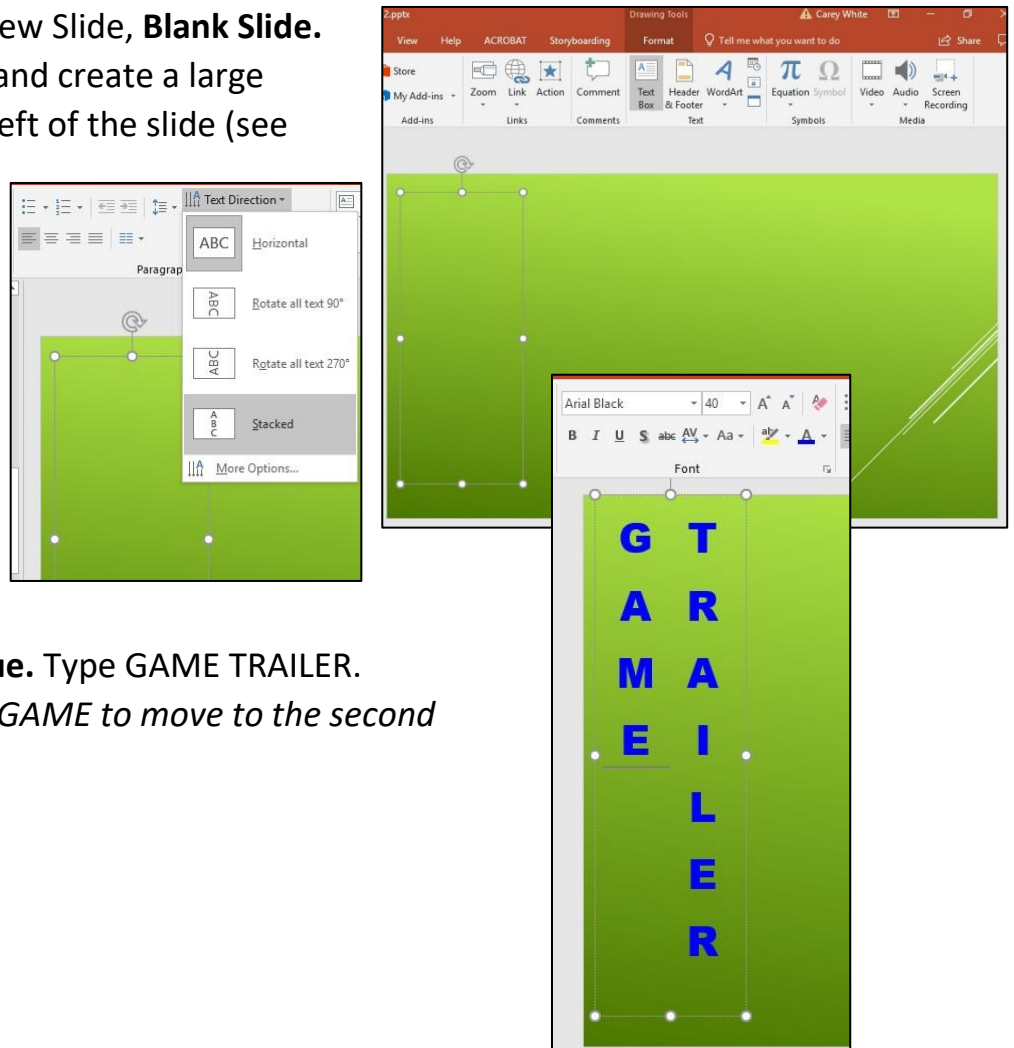
4. To change a picture's orientation (facing left or facing right), **simply drag one handle from right to left or from left to right**. For example, to change Donkey Kong from facing right to facing left, **drag the left handle all the way over to the right side** and watch the orientation change from facing right to facing left.



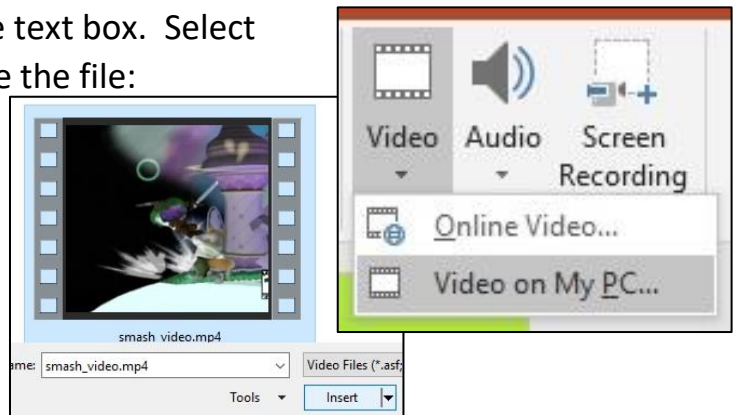
5. **Create Slide 4: Insert, New Slide, Blank Slide.** Choose **Insert, Textbox** and create a large vertical text box on the left of the slide (see example):

6. Click inside the text box and choose the Home tab. **Select Text Direction, Stacked.**

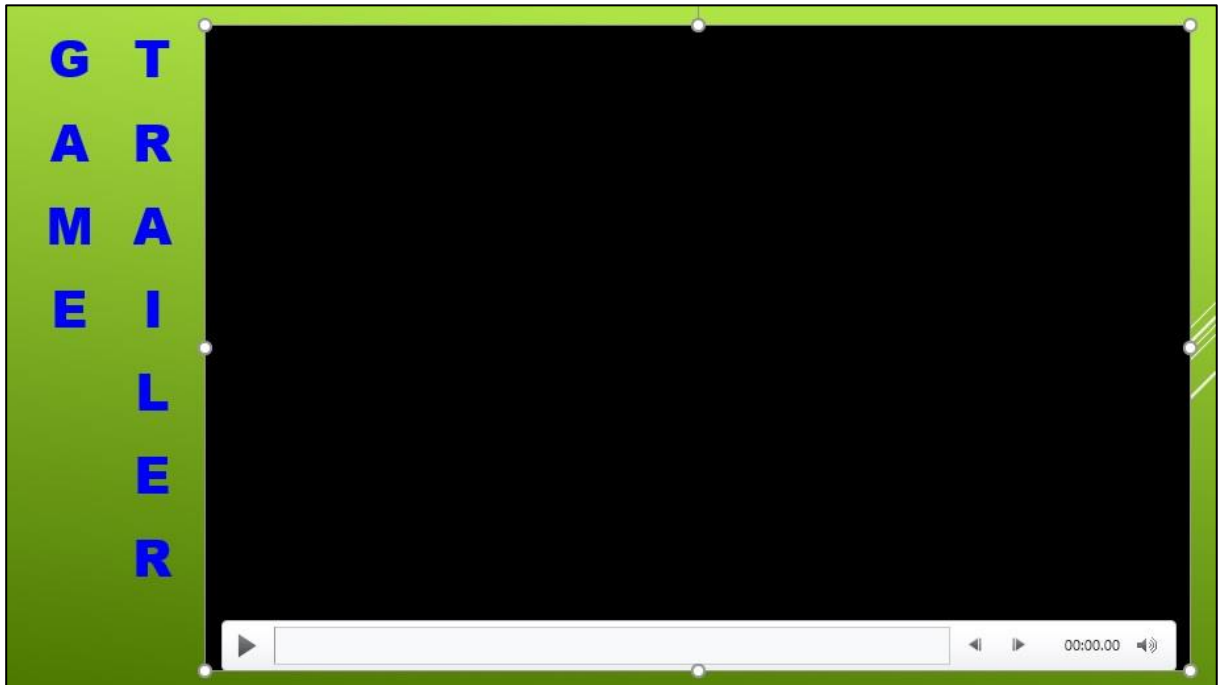
7. Click inside the text box and choose font family: **Arial Black**, **Point Size: 40, Color: Blue**. Type **GAME TRAILER**.  
*Hint: Press ENTER after GAME to move to the second column.*



8. Now insert the video to the right of the text box. Select **Insert, Video, Video on My PC**. Choose the file: **“smash\_video.mp4”** and click **Insert**.



9. Grab the handles of the video and size the video to fill the screen as shown below:



10. Click File, Save As: **“Super Smash Brothers\_Exercise 2.pptx”**